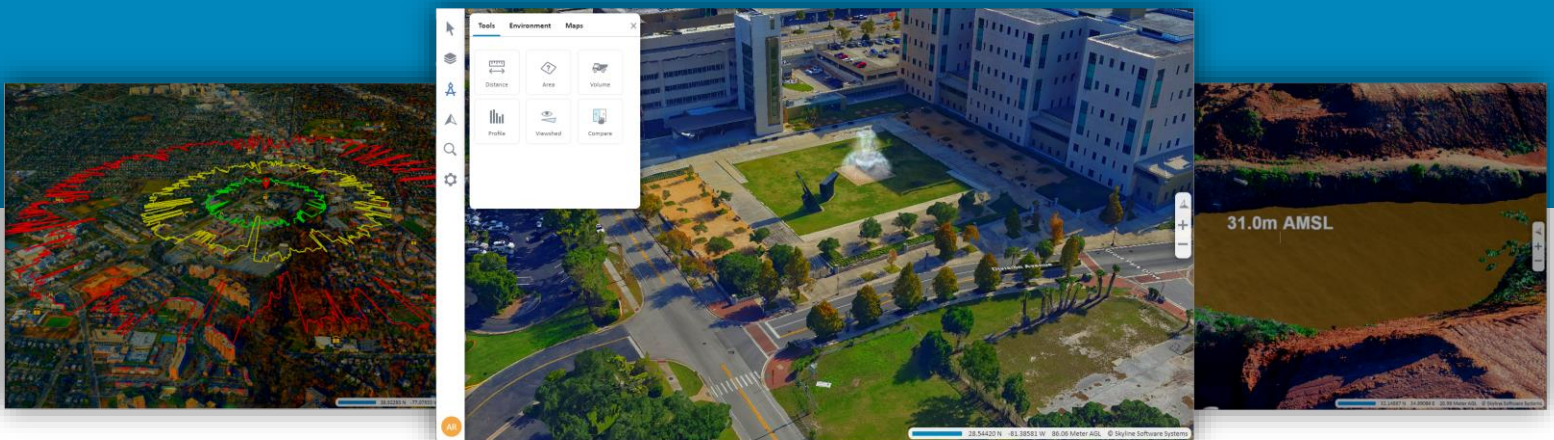


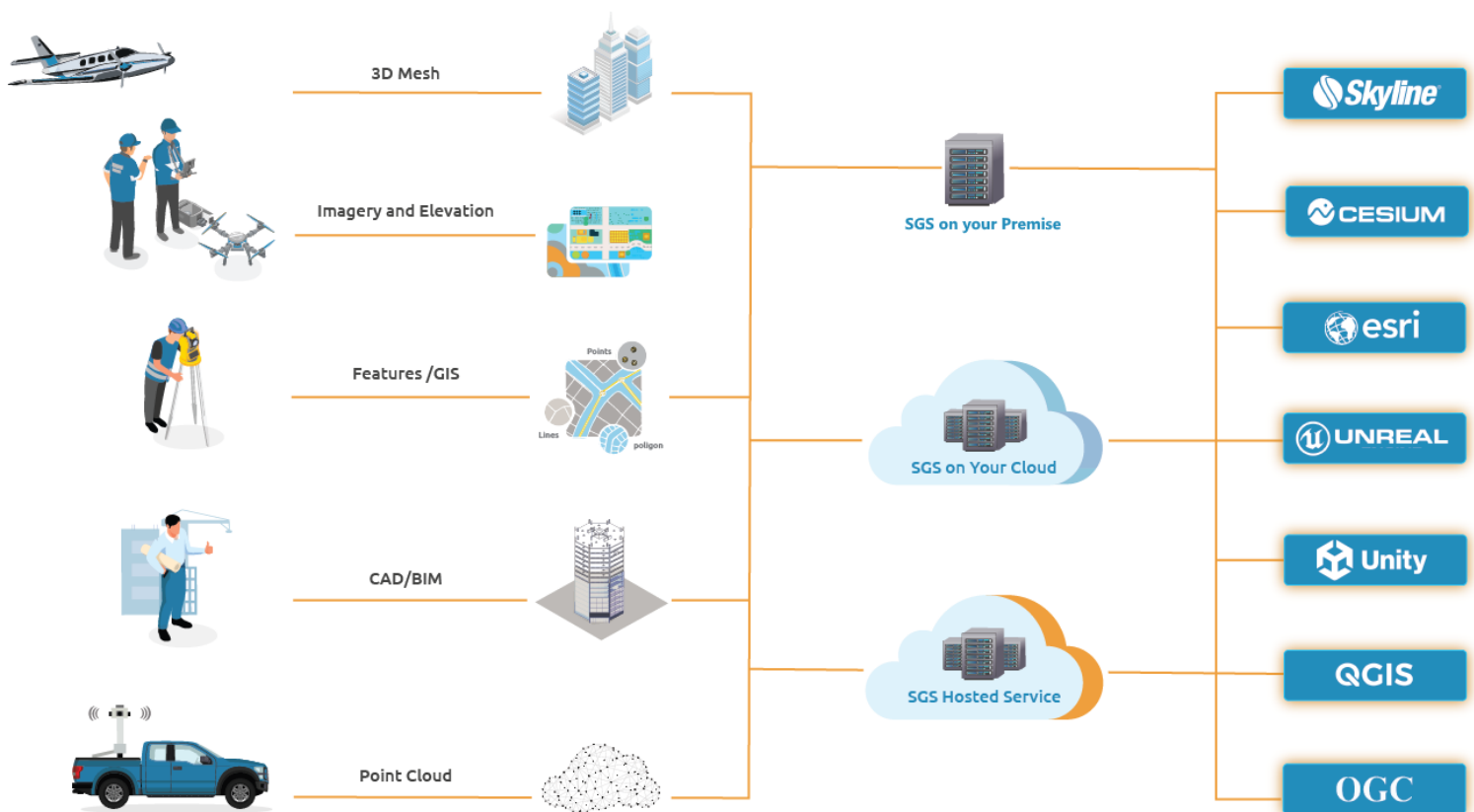
# SkylineGlobe Server

## Release Notes

### V 8.1



SkylineGlobe Server is a private cloud solution that provides a comprehensive set of web services for publishing, storing, managing and streaming 3D spatial data. All your spatial data types can be streamed including imagery (MPT/TBP/WMS/WMTS), elevation (MPT/TBP/WMS/WMTS), feature (WFS/WFS-T), 3D Mesh (3DML, OGC 3D Tiles, Esri I3S/SLPK), point cloud (CPT, OGC 3D Tiles), project files and other resources. Through a single publishing operation, data is made ready for consumption by all TerraExplorer clients: Desktop, Web and Mobile, as well as other geospatial applications including Esri, QGIS and Cesium-based viewers.



## TerraExplorer Fusion Plus License Option

Every SGS installation includes the capability to upgrade to TerraExplorer Fusion Plus level. This upgrade occurs dynamically in TerraExplorer Fusion when a project is accessed from a SkylineGlobe server with an active Plus license. The Plus license grants Plus capabilities across the server, while allowing for the selective restriction of certain sites to Viewer-only mode.

### **Key features in TerraExplorer Fusion Plus include:**

- Advanced analysis tools
- Load and style layers
- Drawing tools
- Feature layer editing option
- Publish and share projects

## Stability and Bug Fixes

- **Layer Naming Security:** Resolved an issue where layer names containing a dot as a delimiter failed to load due to security restrictions.
- **Cloud Publishing:** Fixed a bug that prevented publishing to SkylineGlobe Cloud for projects with extremely large Photo Inspector datasets.
- **SQLite Feature Layer Bug:** Corrected an issue where editing an SQLite feature layer in TEF corrupted the FLY file, resulting in features not appearing on the terrain.
- **SSO Login Failure:** Resolved a problem causing SSO login failures for users with SG Cloud accounts enabled (SG Cloud User = True).
- **File System Security Enhancement:** Addressed a critical security vulnerability in the project publishing system, where previously, users could manipulate resource URLs to access and download unauthorized server files.
- **Login Issues:** Addressed specific cases where login attempts failed, improving reliability.
- **GTX File Updates:** Updated GTX files to ensure compatibility and performance.
- **Database Compatibility:** Fixed a bug preventing TEF from loading feature layers from Oracle and PostgreSQL data sources.

# REQUIREMENTS - SKYLINEGLOBE SERVER

## Hardware Requirements

System Memory	8 GB RAM (16 GB or more recommended)
Processor	4 cores (8 or 16 cores recommended)

## SkylineGlobe Server

Operating System	Windows Server 2016 / 2019 / 2022 (64-bit)
User Privileges	Administrator privileges required for installation and configuration
Additional Software	Microsoft IIS8.5, IIS10 with Net 4.8 and ASP.Net

## SkylineGlobe Server Edge

Operating System	Windows 10 / 11 , Windows Server 2019 / 2022
User Privileges	Administrator privileges required for running the service

## SkylineGlobe Server for Linux

Operating System	Ubuntu
Additional Software	Wine v7 and up, .Net 4.8

For additional information, check out the [SkylineGlobe Server](#) section and [TerraExplorer Fusion](#) section of our knowledge base.



[www.skylinesoft.com](http://www.skylinesoft.com)

Copyright © 2024 Skyline Software Systems Inc. All rights reserved. Skyline, SkylineGlobe, the Skyline logo, TerraExplorer and the TerraExplorer logo are trademarks of Skyline Software Systems Inc.

